

FITTING NUMBER

40042500

FITTING

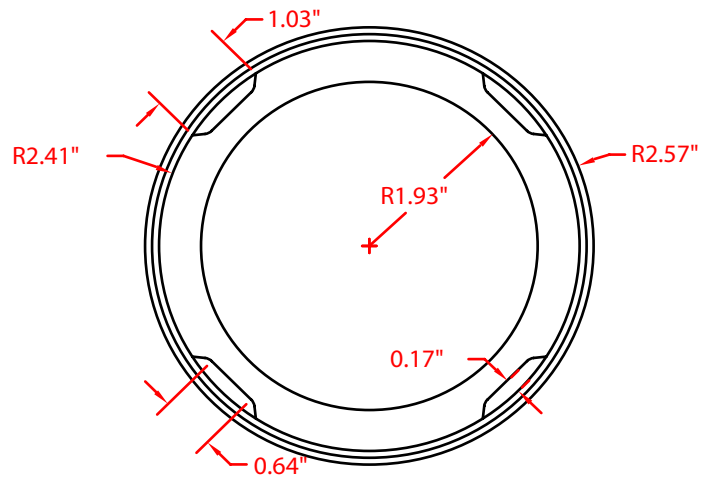
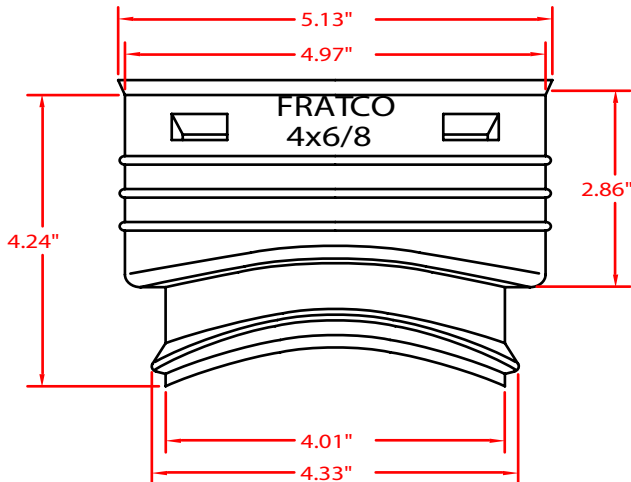
SMALL TAP TEE (6/8)

SIZE

4"



MEASUREMENTS



PART WEIGHT

70 grams (+/- 7 grams)

PART WALL DISTRIBUTION

.07"

These specifications are held in standard according to ASTM F667 - Standard Specification for Polyethylene Plastics Pipe and Fittings material.